

ODM Quality Report

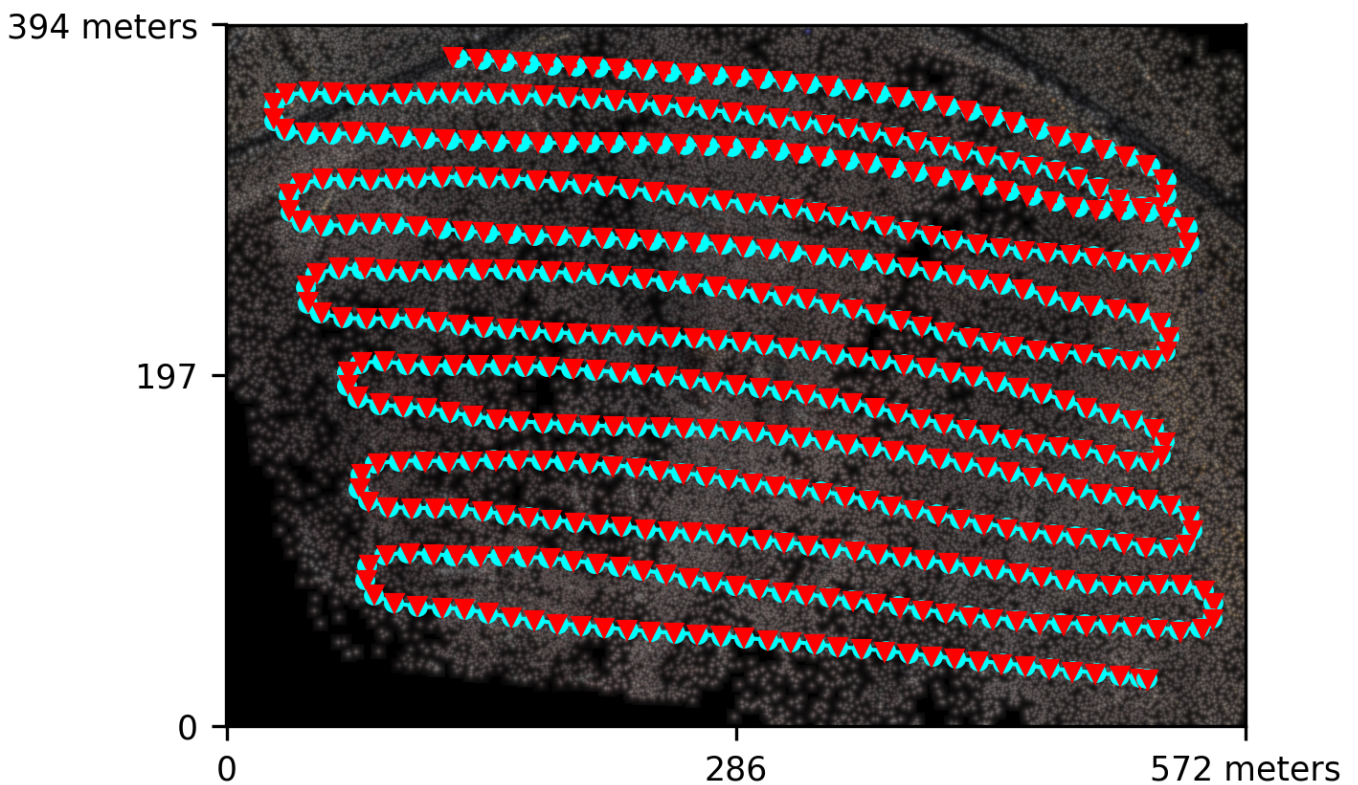
Processed with ODM version 3.5.6

Dataset Summary

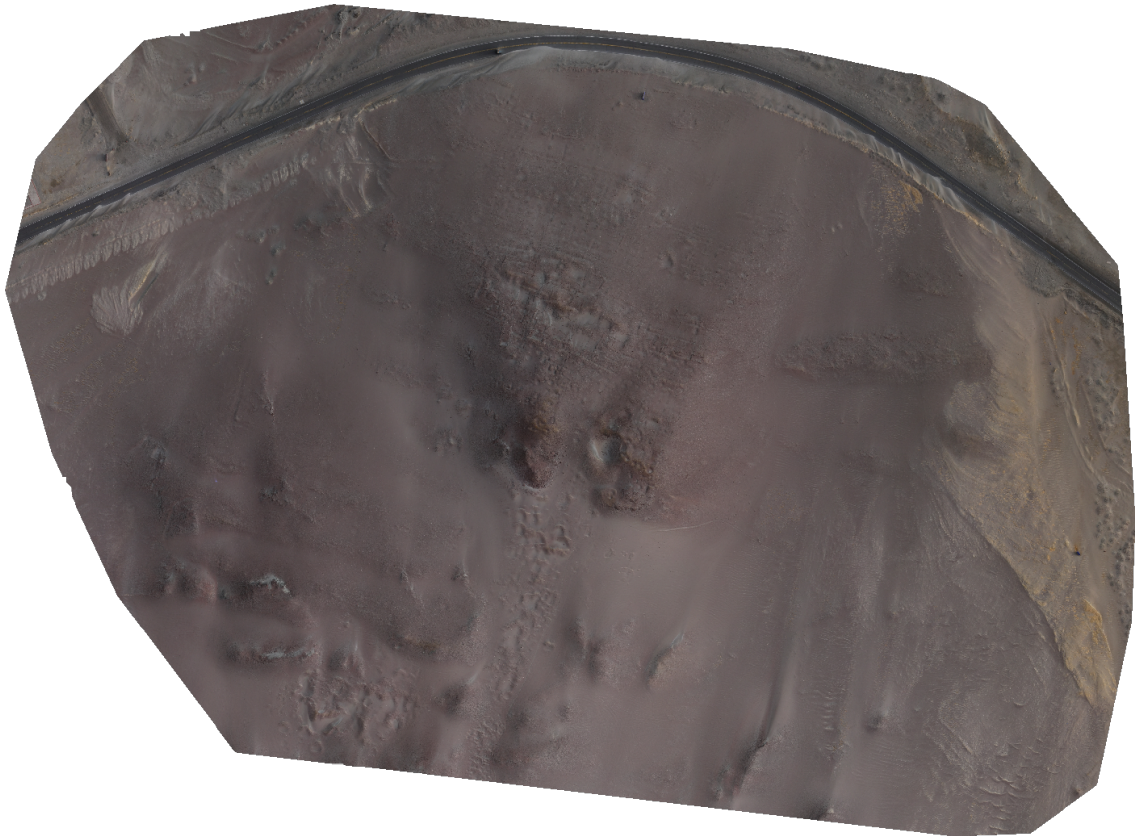
Date	10/10/2025 at 02:55:58
Area Covered	0.183925 km ²
Processing Time	1.0h:48.0m:27.0s
Capture Start	07/10/2025 at 07:02:55
Capture End	07/10/2025 at 07:19:33

Processing Summary

Reconstructed Images	500 over 500 shots (100.0%)
Reconstructed Points (Sparse)	62037 over 62919 points (98.6%)
Detected Features	1,247 features
Average Ground Sampling Distance (GSD)	12.1 cm
Reconstructed Features	603 features
Geographic Reference	GPS
GPS errors	1.14 meters

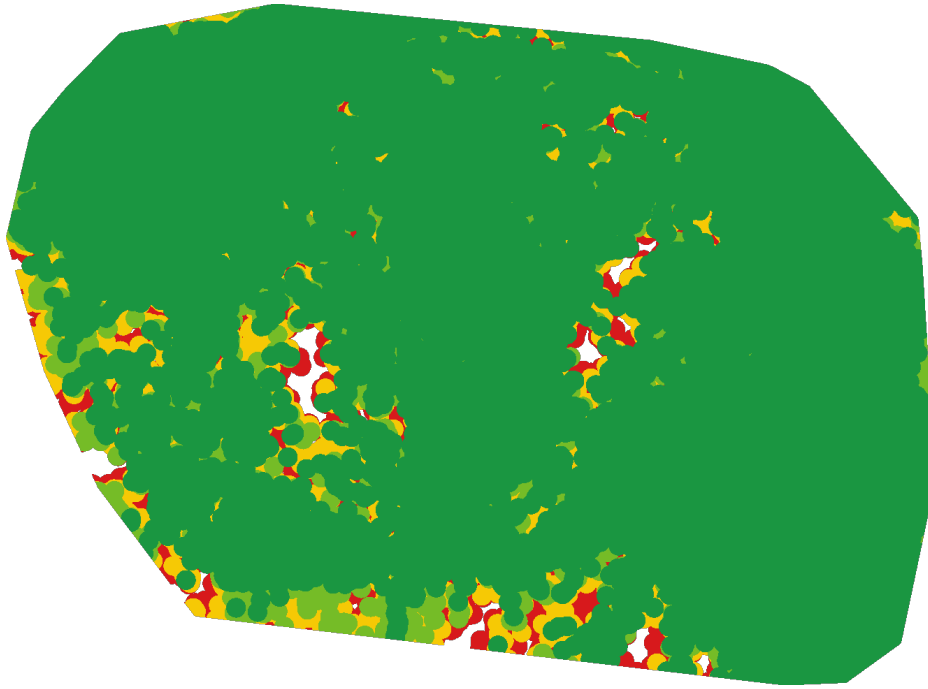


Previews



Orthophoto

Survey Data



■ 2 ■ 3 ■ 4 ■ 5+

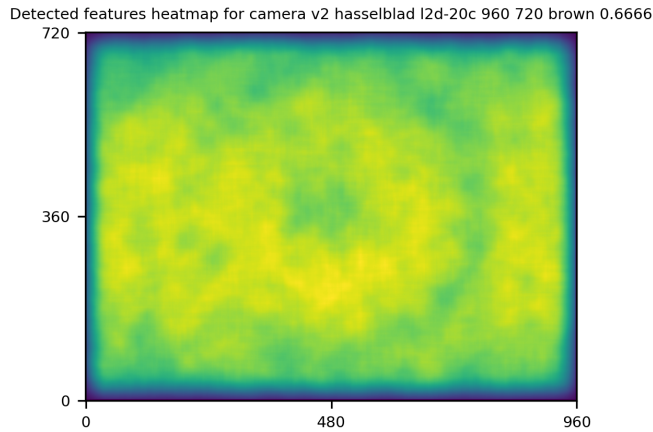
GPS/GCP/3D Errors Details

GPS	Mean	Standard Deviation	RMS Error
X Error (meters)	0.008	1.223	1.223
Y Error (meters)	-0.000	0.497	0.497
Z Error (meters)	-0.003	0.232	0.232
Total			1.141

3D	Mean	Standard Deviation	RMS Error
X Error (meters)	0.105	0.194	0.221
Y Error (meters)	0.136	0.246	0.281
Z Error (meters)	0.300	0.505	0.587
Total			0.378

	Absolute	Relative
Horizontal Accuracy CE90 (meters)	2.303	0.375
Vertical Accuracy LE90 (meters)	0.387	0.693

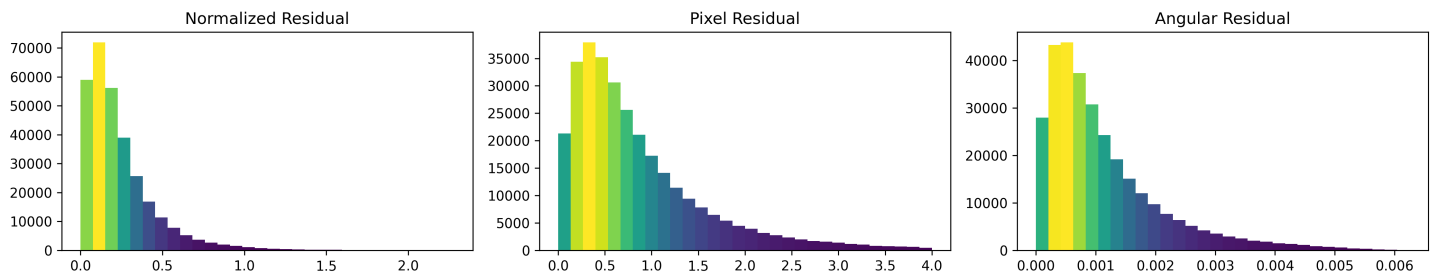
Features Details



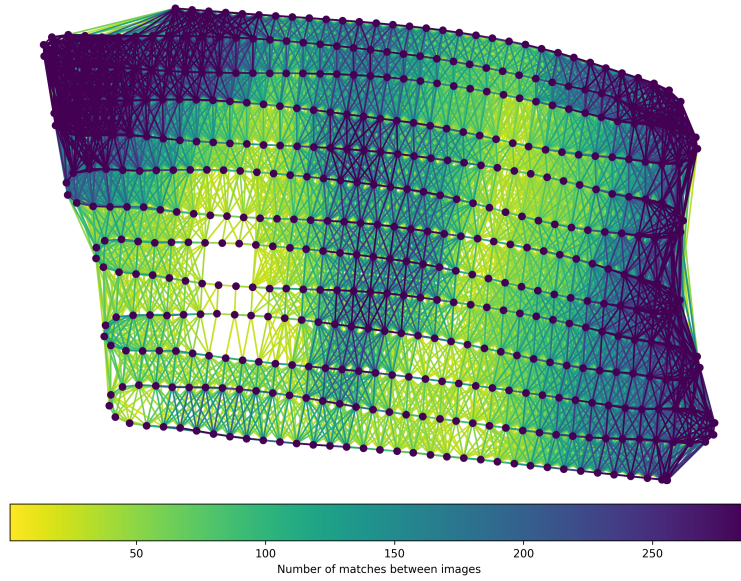
	Min.	Max.	Mean	Median
Detected	703	2233	1273	1247
Reconstructed	80	1502	634	603

Reconstruction Details

Average Reprojection Error (normalized / pixels / angular)	0.24 / 0.85 / 0.00113
Average Track Length	5.12 images
Average Track Length (> 2)	7.28 images



Tracks Details



Length	2	3	4	5	6	7	8	9	10
Count	25433	10324	5871	3839	2808	2202	1716	1329	1115

Camera Models Details

v2 hasselblad l2d-20c 960 720 brown 0.6666

	k1	k2	k3	p1	p2	focal	aspect_ratio	cx	cy
Initial	0.0000	0.0000	0.0000	0.0000	0.0000	0.6667	1.0000	0.0000	0.0000
Optimized	-0.0002	0.0044	0.0114	-0.0009	0.0002	0.6635	1.0000	0.0015	-0.0010

